

**6. Shareholding & Organization Structure**

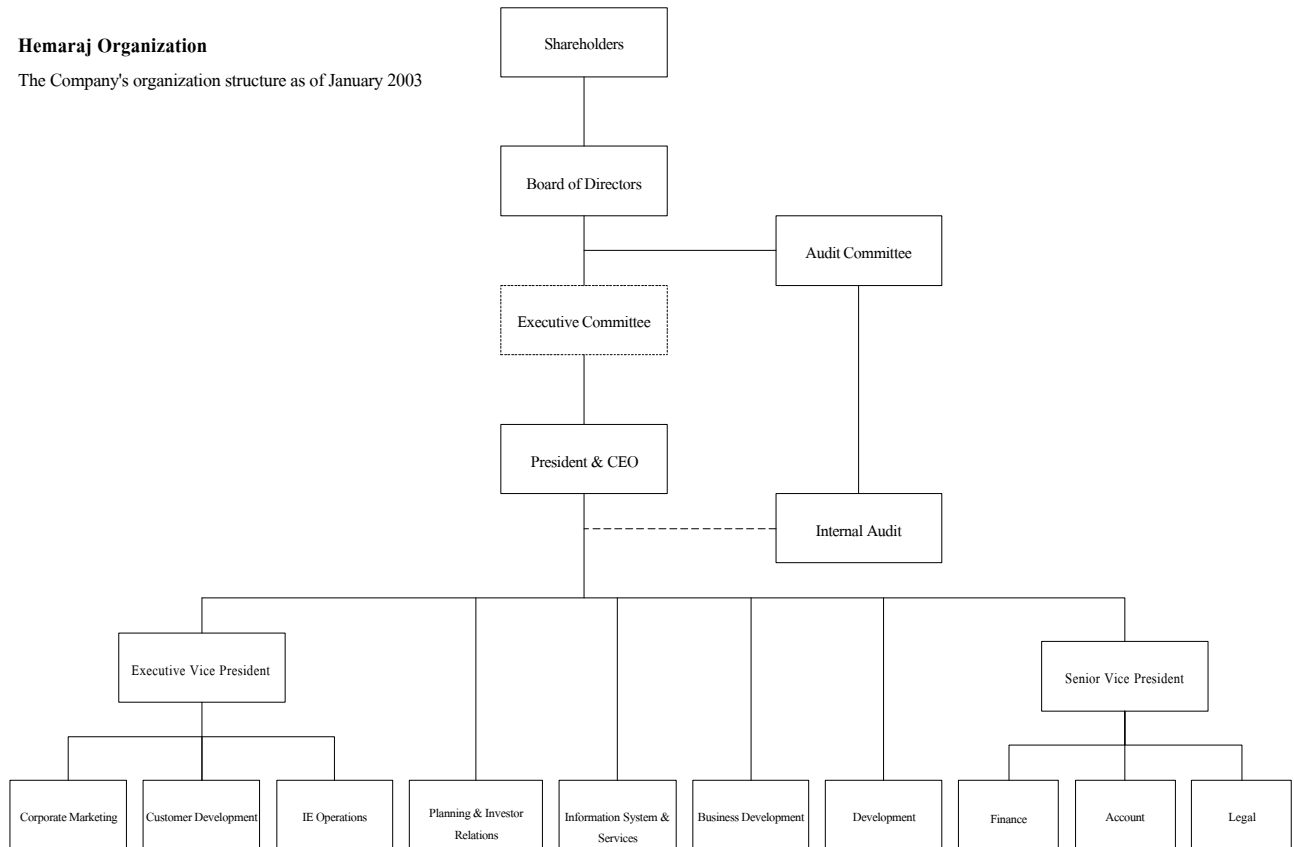
**Top Ten of Hemaraj Land And Development's Shareholders as at 27 December 2002**

	Name	No. of Shares	% of total Issued Shares
1	Thailand Securities Depository Co., Ltd. for Depositor (Thai)	128,974,734	36.36%
2	Miss Phenpunnee Horrurungang	40,282,371	11.36%
3	Mr. Sumeth Horrurungang	31,444,757	8.86%
4	Miss Kanokthip Nuamcharoen	17,000,000	4.79%
5	Mrs. Vasana Horkaew	16,800,000	4.74%
6	Miss Charuwan Chaisupawan	14,500,000	4.09%
7	Mr. Kiat Yingkiattaweasuk	13,014,514	3.67%
8	Thailand Securities Depository Co., Ltd. for Depositor (Foreigner)	12,963,044	3.65%
9	Sun Tech Group Public Company Limited		

**Organization Structure of Hemaraj Land And Development Public Company Limited as of January 2003**

**Hemaraj Organization**

The Company's organization structure as of January 2003



## 7. General Information

General Information					Revenue Structure					
Name	Address	Nature of Business	Paid Capital (Mil.Baht)	% of Investment	2002 %	2001 %	2000 %	2000 %	2000 %	
Hemaraj Land And Development Public Company Limited Registration No. 141 Share Capital 1,300,000,000 shares Issued 354,742,385 shares	18th Floor, UM Tower, 9 Ramkhamhaeng Rd., Suanluang, Bangkok 10250 Tel.(662) 719-9555 Fax (662) 719-9546-7 www.hemaraj.com E-mail: sales@hemaraj.com	Industrial Estate Developer	3,547		453.02 25%	287.53 30%	138.11 20%			
<b>Subsidiary Companies</b>										
Hemaraj International Limited (1)	Scotia Centre, 4th Floor P.O.Box 2804, George Town, Grand Cayman, Cayman Islands			100 (\$1 = 25.29 Baht)						
H-International (BVI) Company Limited (2)	Romasco Place, Wickhams Cay 1, P. O. Box 3140, Road Town, Tortola British Virgin Islands.			100	4%	0%	4%			
Eastern Industrial Estate Co., Ltd.	18th Floor, UM Tower, 9 Ramkhamhaeng Road, Suanluang,	Industrial Estate Developer	400		11%	22%	29%			
Eastern Pipeline Service Co., Ltd. (3)	18th Floor, UM Tower, 9 Ramkhamhaeng Road, Suanluang,		60		1%	2%	2%			
Eastern Seaboard Industrial Estate (Rayong) Co., Ltd.	18th Floor, UM Tower, 9 Ramkhamhaeng Road, Suanluang,	Industrial Estate Developer	358	60	43%	78%	64%			
H-Construction Management and Engineering Co., Ltd.	18th Floor, UM Tower, 9 Ramkhamhaeng Road, Suanluang,	Supervision Service			0%	0%				
<b>Associated Companies</b>										
Glow Company Limited (5) (Formerly known as H-Power Company Limited)	195 Empire Tower, 38th - Park Wing, South Sathorn Road, Yannawa, Sathom				15%					
Industrial Power Company Limited (4)	195 Empire Tower, 38th - Park Wing, South Sathorn Road, Yannawa, Sathom	Co-Generation Power Plant	800							
Operation Power Services Company Limited (4)	195 Empire Tower, 38th - Park Wing, South Sathorn Road, Yannawa, Sathom	Operation&Maintenance	1							
Bowin Power Company Limited (4)	195 Empire Tower, 38th - Park Wing, South Sathorn Road, Yannawa, Sathom	Independent Power								
Industrial Water Supply Company Limited (4)	195 Empire Tower, 38th - Park Wing, South Sathorn Road, Yannawa, Sathom	Demineralised Water Plant	21							
Elyo-H Facilities Management Limited	107/1 Moo 4, Eastern Seaboard Industrial Estate (Rayong), Pluakdeang, Rayong	Facilities Management Services	26		0%	0%				
Eastern Fluid Transport Company Limited	618 Nimom Makkasan Road Makkasan, Ratchthewi	Management and Maintenance	10	15						
<b>Total Revenue : Hemaraj Land And Development PLC. and Subsidiaries</b>					<b>1,810.62</b>	<b>100%</b>	<b>954.51</b>	<b>100%</b>	<b>679.99</b>	<b>100%</b>

### Remark

- 1) Incorporated in the Cayman Islands
- 2) Incorporated in the Territory of the British Virgin Islands
- 3) Subsidiary of Eastern Industrial Estate
- 4) Indirectly held through Glow Co., Ltd.
- 5) Partially sold shares in 2002

**8. Board of Directors, Executive Committee, Audit Committee and Management**

	Age	Graduation	Experiences Related with the Company			Management (%), as
			Period	Position	Organization / Company / Type of	
1 Mr. Sawasdi Horrungruang Chairman of the Board of Directors	62	Honorary Doctorate Degree Bachelor Degree of Business Administration, Humanity Faculty, Burapha University		Chairman of The Associate	Thai Industrial Association T H K Real Estate	
2 Mr. Thongchai Srisomburananonta Vice Chairman of The Board	50	-	Since 1989	-	-	
3 Mr. Prateep Trilohaka Vice Chairman of The Board	Passed Away	Bachelor Degree Faculty of Economics Thammasat University		-	-	-
4 Mr. Thavorn Anankusi Vice Chairman of The Board	61	-		-		
5 Mr. David Richard Nardone President & CEO	47	MBA Northeastern University, Boston, USA		-	-	
6 Mr. Sudhipan Charumani Independent Director and Chairman of Audit	59	Charter Accountant Institutes (Britain and Wales)		-	-	-
7 Mr. Peter John Edmondson Independent Director and Audit Committee	52	Bachelor of Science in Chemistry (Honor) University of Sheffield, England		-	-	
8 Mrs. Punnee Worawuthichongsathit Independent Director and Audit Committee	51	Bachelor of Accounting (Honor) Chulalongkorn University		-	-	-
9 Mr. Vivat Jiratikamsakul Executive Vice President	47	Bachelor of Sanitary, Faculty of Engineering Chulalongkorn University	Since 1989	-	-	
10 Ms. Pattama Horrungruang Senior Vice President	40	MBA Thammasat University	Since 2003			-
11 Mr. Khamhoung Ratsamany Director - Industrial Estate Operations	36	MBA Bangkok University	Since 1995	-	-	-
12 Mr. Tanin Subboonrueng Director - Development	39	MBA, Business Administration Assumption University	Since 1996	-	-	-
13 Mr. Sirisak Kijruksa Director - Accounting	42	Bachelor of Accounting Bangkok University	Since 1990	-	-	-
14 Ms. Somjai Wachiraha Director of Finance	42	Bachelor of Business Administration General Affairs, Ramkhamhaeng University		-	-	-
15 Mr. Paopitaya Smutrakalin Assistant Director - Planning & Investor Relations	32	Drexel University, Philadelphia, USA		-	-	-
16 Ms. Jinnapat Tongviseskul Assistant Director - Marketing	32	MBA, Economic & Administration Chulalongkorn University		-	-	-
17 Mr. Apichat Trongsuksun Manager - Information System & Services	38	MBA		-	-	-

**9. Checklist to the SEC 56-2 Form**

	<b>Page</b>
<b>1. General Information</b>	
1.1 Financial Highlights	1
1.2 Board of Directors, Executive Committee, Audit Committee and Management	
1.3 General Information – The Company & its Subsidiaries	
1.4 Shareholding & Organization Structure	
1.5 Project Summary	
1.6 Other References	
<b>2. Message from the Board of Directors</b>	
<b>3. The Company's Business Profile</b>	
3.1 Nature of Business	
3.2 Core and Related Business	
3.3 Revenue Structure by Business Line	
<b>4. Economic and Competitive Condition</b>	
<b>5. Management Analysis</b>	
5.1 Operating Performance	
5.2 Financial Status	
5.3 Risk Factors & Others	
<b>6. Management Structure for Internal Control</b>	
6.1 Board of Directors and Executive Committee	
6.2 Audit Committee	
6.3 Company Management and Structure	
<b>7. Selection of Company's Director and Management</b>	
<b>8. Remuneration for Director and Management</b>	
<b>9. Stocks held by Directors / Management</b>	
<b>10. Good Corporate Governance</b>	
<b>11. Report of Certified Public Accountant</b>	
<b>12. Financial Statement and Note to Financial Statement</b>	

**10. Project Summary****Project Summary**

As of 31 December, 2002

Industrial Estate	Cumulative (Rai) Sold	%	Industrial Area	Total Area (Rai)	% of Completion
<b>Chonburi Industrial Estate (Bowin)</b>					
Phase I, II (A,B)	1,565**	80%	1,950	2,428	100
Phase II (C) , (D)	503	93%	542	1,099	100
Phase III			200*	330	
<b>Total Chonburi</b>	<b>2,068</b>		<b>2,692</b>	<b>3,857</b>	
<b>Eastern Industrial Estate (Map Ta Phut)</b>					
<b>Eastern Seaboard Industrial Estate (Rayong)</b>					
Phase I	1,536	100%	1,536	2,075	98
Phase II (A)	926**	90%	1,032	1,442	98
Phase II (B)	494**	60%	823	1,156	97
Phase IV (A)	3**	3%	90	90	90
Phase IV (B)	37	70%	53	191	99
Phase IV (C)	168	59%	286	376	86
Expansion:			1,255*	2,320***	
<b>Total Eastern Seaboard</b>	<b>3,164</b>		<b>5,075</b>	<b>7,650</b>	
<b>Total (Rai)</b>	<b>6,563</b>		<b>9,568</b>	<b>14,215</b>	

\* estimate

\*\* includes land lease

\*\*\* Land in hand plus fixed option to purchase from Siam Food Products Plc.

Note: 1 Rai = 1,600 Sq. meters or approx. 0.4 acres.